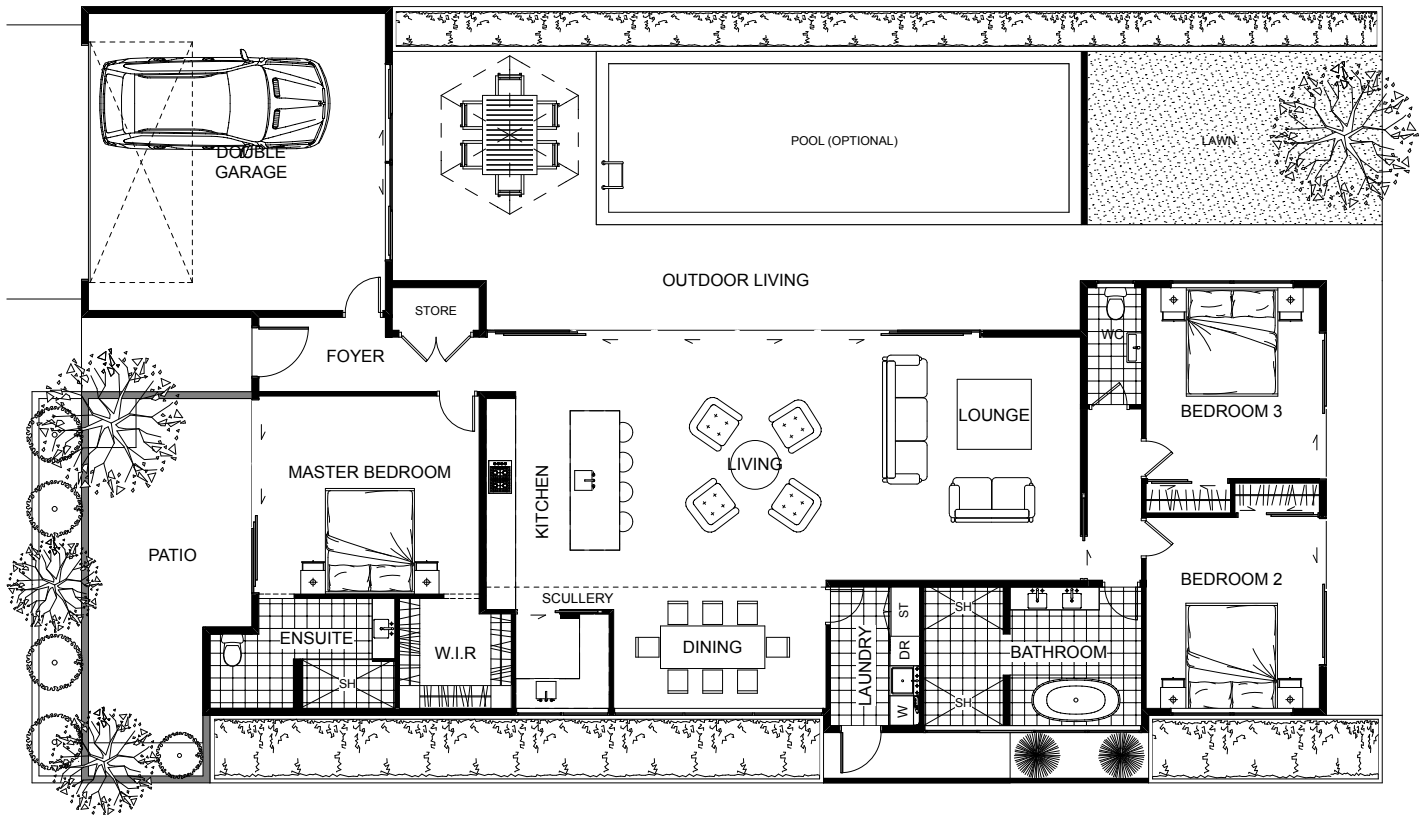







Broadwood



This is truly one of the prestigious pebbles of modern design, boasting of a spacious open living area, one master, two bedrooms, a double garage, a paved patio with a pool and barbeque. The texture of the façade and the texture of the land reinforce and enhance each other, showing the perfect balance between the two. It is a great living space letting in as much sunlight as possible through many floor to ceiling windows. It is rightfully an absolute modern masterpiece.



Floor Area: 221m²

 2
  3
  2
  25.2m
  14.7m

Contact Dave McLeod
 m: 0274 342 857
 e: d.jmcleod@xtra.co.nz



www.snowfedbuilders.co.nz